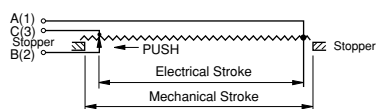




Terminal Connection Diagram



Standard Model Nos.

- OF40LP100 Stroke 100mm
- OF40LP200 Stroke 200mm
- OF40LP300 Stroke 300mm

General Specifications

Model No.	OF40LP100	OF40LP200	OF40LP300
Standard Resistance Range	100Ω ~ 20kΩ	100Ω ~ 50kΩ	200Ω ~ 50kΩ
Max. Practical Resistance Value	40kΩ	80kΩ	100kΩ
Total Resistance Tolerance	Standard Class	±5% (J)	
	Precision Class	±3% (H)	
Independent Linearity Tolerance	Standard Class	±0.5%	±0.3%
	Precision Class	±0.25%	±0.1%
Power Rating	1.0W	2.0W	3.0W
Noise	Within 100Ω E.N.R.		
Electrical Stroke	100±1mm	200±1mm	300±1mm
Mechanical Stroke	Approx. 105mm	Approx. 205mm	Approx. 305mm
Insulation Resistance	Over 100MΩ at 500V.D.C.		
Dielectric Strength	1 minute at 900V.A.C.		
Friction	Within 20N (2kgf)		
Stopper Strength	Approx. 90N (9kgf)		
Max. Working Voltage	300V		
Resistance Temperature Coefficient of Wire	±20 p.p.m./°C		
Mass	Approx. 1,000g	Approx. 1,200g	Approx. 1,500g

Standard Resistance Values ■No. of Wire Turns ■Resistance Wire Used

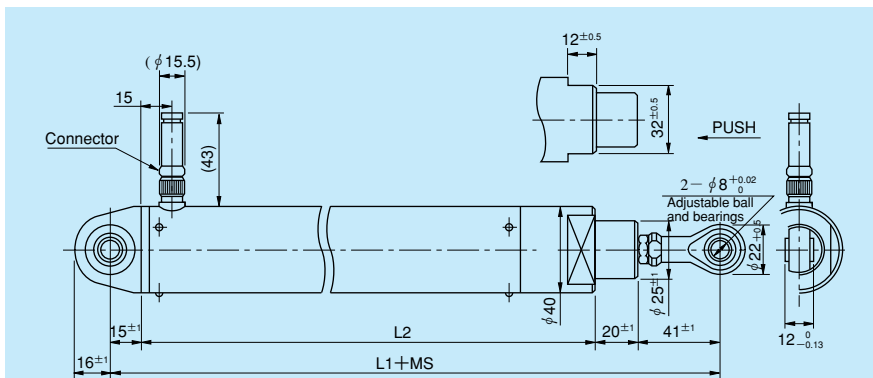
Resist. Value (Ω)	100	200	500	1k	2k	5k	10k	20k	50k	100k
OF40LP100	530	670	910	800	1,000	1,400	1,700	2,200	—	—
OF40LP200	830	1,050	1,400	1,800	1,600	2,200	2,850	3,450	4,900	—
OF40LP300	—	1,400	1,900	2,400	2,200	3,000	3,800	4,750	6,450	※8,000
Resist. Wire Used	Cu-Ni System					Ni-Cr System				

Note: Mark ※shows values at special higher practical resistance.

Special Specifications Available

Stroke 500mm (SOF40LP500), Extra taps (Available up to 1 tap), Special machining on the shaft, Non-oil-filled type, Conductive plastic resistive element.

Standard Dimensions



Model No.	Mechanical Stroke (MS)	L1	L2
OF40LP100	Approx. 105	328	252
OF40LP200	Approx. 205	428	352
OF40LP300	Approx. 305	528	452

Specifications of Connector

Water-proof type  
 Number of poles: 6 poles  
 Electrical wire diameter to be connected: φ 6.3mm max.