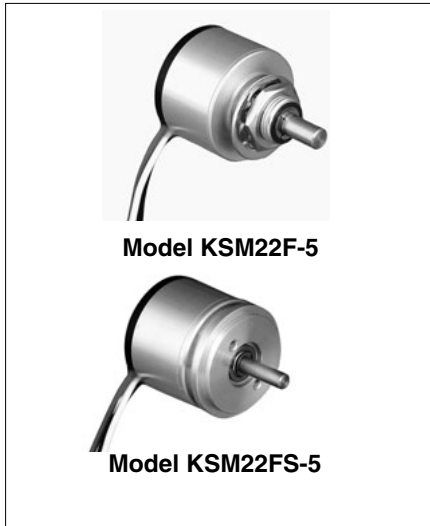
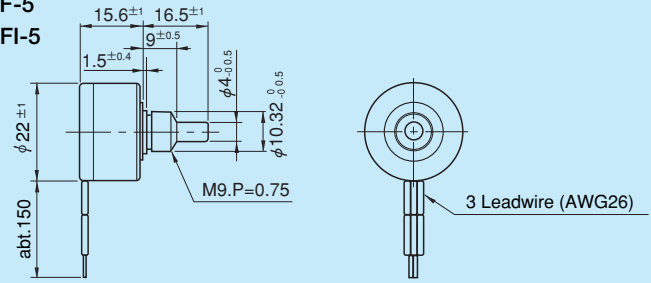


● Standard Dimensions

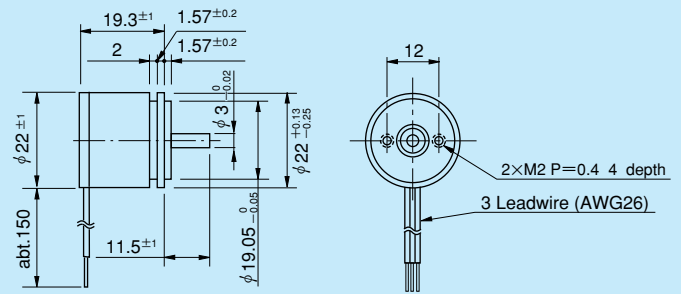


■ Model KSM22F-5  
KSM22FI-5



Note: 1 pc. each of inner teeth washer and hex nut are attached.

■ Model KSM22FS-5



Note: The relationship between the tapping hole's position (2×M2) and the leadwire's position is almost equal to those shown in the above drawing.

● Standard Model Nos.

- KSM22F-5 (Bushingsmount)
- KSM22FI-5 (Bushingsmount)
- KSM22FS-5 (Servomount)

● General Specifications

Model No.	KSM22F	KSM22FI	KSM22FS
Current Consumption	Approx. 3.5mA		
Independent Linearity Tolerance	±0.5%FS (FS=100°)		
Mechanical Rotating Angle	360° (Endless)		
Effective Electrical Angle	±50° (100°)		
Applied Voltage	5V±10% D.C.		
Load Resistance	10kΩ min.		
Output Voltage Range	Approx. 10%~90% Vin · FS (FS=100°)		
Output Temperature Characteristic	Within ±2.5% Vout · FS		
Drift at Center Position	Within ±0.5% Vout · FS		
Operating Temperature Range	-40°C ~ +105°C		
Storage Temperature Range	-40°C ~ +105°C		
Mass	Approx. 15g		
Starting Torque mN·m (gf · cm)	Within 1 (10)	Within 3 (30)	Within 0.2 (2)

● Environmental Specifications

Model No.	KSM22F	KSM22FI	KSM22FS
Thermal Shock	5 cycles -50°C ~ +105°C		
Exposure at Low Temperature	24 hours at -50°C		
Exposure at High Temperature	1,000 hours at +105°C		
Moisture Resistance	40°C 95%RH 120 hours		
Vibration	10~2,000Hz 196m/s <sup>2</sup> 12 hours		
Shock	980m/s <sup>2</sup> (18 times)		
Life Expectancy (shaft revolutions)	Approx. 100,000,000	Approx. 10,000,000	Approx. 200,000,000

(Note) Life expectancy may differ from the specifications depending on status of use.

● Special Specifications Available

Special applied voltage (Possible to meet with from 3V.D.C. to 10V.D.C.), Special effective electrical rotating angle (Possible to meet with from ±25° to ±80°. In case of ±60° to 80°, independent linearity tolerance becomes within ±1.0%), Special machining on the shaft.