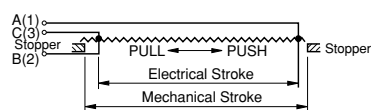




Model 40FLP500A

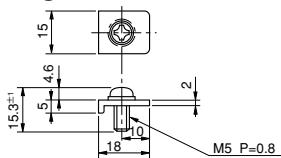
Terminal Connection Diagram



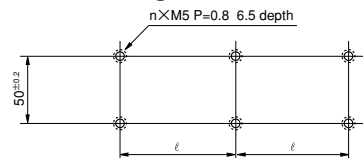
Standard Model Nos.

40FLP200A	Stroke	200mm
40FLP300A	Stroke	300mm
40FLP400A	Stroke	400mm
40FLP500A	Stroke	500mm
40FLP750A	Stroke	750mm
40FLP1000A	Stroke	1,000mm

Fixing Nail



Panel Arrangements

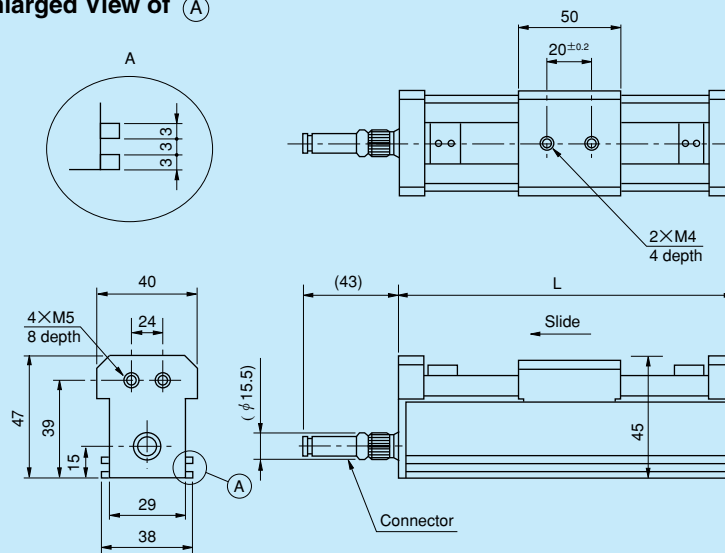


General Specifications

Model No.		40FLP200A	40FLP300A	40FLP400A	40FLP500A	40FLP750A	40FLP1000A
Standard Resistance Range		2k~10kΩ	5k~20kΩ	5k~100kΩ	5k~200kΩ		10k~500kΩ
Total Resistance Tolerance	Standard Class	±20% (M)					
	Precision Class	±10% (K)					
Independent Linearity Tolerance	Standard Class	±0.5%					
	Precision Class	±0.1%					
	Super-precision Class	±0.05%		-		-	
Resolution		Essentially infinite					
Output Smoothness		Within 0.1% against input voltage					
Contact Resistance Variation		Within 2% C.R.V.					
Power Rating		1.5W	2.0W	2.5W	5.0W	7.5W	10.0W
Electrical Stroke		200±1mm	300±1mm	400±1mm	500±1mm	750±1mm	1000±1mm
Mechanical Stroke (MS) (Approx.)		205mm	305mm	405mm	505mm	755mm	1005mm
Insulation Resistance		Over 1,000MΩ at 500V.D.C.					
Dielectric Strength		1 minute at 900V.A.C.					
Max. Working Voltage		500V					
Friction		Within 2N (200gf)					
Stopper Strength		Approx. 20N (2kgf)					
Resistance Temperature Coefficient		±400p.p.m./°C					
Mass		Approx. 1.2kg	Approx. 1.4kg	Approx. 1.6kg	Approx. 1.8kg	Approx. 2.3kg	Approx. 2.8kg

Standard Dimensions

Enlarged View of (A)



Specifications of Connector

Water-proof type  
 Number of poles: 6 poles  
 Electrical wire diameter to be connected: φ 6.3mm max.

Model No.	L
40FLP200A	360
40FLP300A	460
40FLP400A	560
40FLP500A	660
40FLP750A	910
40FLP1000A	1,160

Stroke mm	200	300	400	500	750	1,000
φ mm	260	340	400	260	300	420
Number of attached fixing nails	4	4	4	6	6	6

Note: For models 40FLP200A, 40FLP300A & 40FLP400A, 4 pcs Fixing Nails with M5×12 screw and spring washers for M5 are attached.  
 For models 40FLP500A, 40FLP750A & 40FLP1000A, 6 pcs Fixing Nails with M5×12 screw and spring washers for M5 are attached.