



Model 20HHP-10S (Servomount)

● Standard Model Nos.

Bushingmount type:

20HHP-5S (5-turn)
20HHP-10S (10-turn)

Servomount type:

20HHPS-5S (5-turn)
20HHPS-10S (10-turn)

● General Specifications

Standard Resistance

Values: 2k,5k,10k,20k,50k (Ω) (5-turn)
2k,5k,10k,20k,50k,100k (Ω)(10-turn)

Total Resistance

Tolerance: Standard Class ±10% (K)
Precision Class ±5% (J)

Independent Linearity

Tolerance: 5-turn 10-turn
Standard Class ±0.35% ±0.25%
Precision Class ±0.2% ±0.1%

Resolution:

Essentially infinite

Output Smoothness:

Within 0.05% against input voltage (5-turn)
Within 0.015% against input voltage (10-turn)

Contact Resistance

Variation: Within 5% C.R.V. (5-turn)
Within 3% C.R.V. (10-turn)

Power Rating:

1.0W (5-turn)
2.0W (10-turn)

Electrical Travel:

360° × n ±5° (n: No. of turns)

Mechanical Travel:

360° × n +10°₀ (n: No. of turns)

Insulation Resistance:

Over 100MΩ at 1,000V.D.C.

Dielectric Strength:

1 minute at 1,000V.A.C.

Starting Torque:

Within 5mN·m (50gf·cm) (Bushingmount type)
Within 3mN·m (30gf·cm) (Servomount type)

Stopper Strength:

Approx. 0.9N·m (9kgf·cm) (Bushingmount type)
Approx. 0.6N·m (6kgf·cm) (Servomount type)

Max. Working Voltage: 500V

Resistance

Temperature

Coefficient:

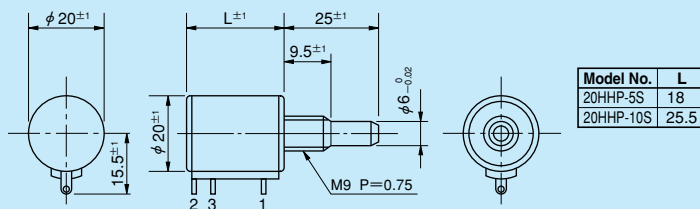
±100p.p.m./°C

Mass:

Approx. 20g (5-turn)
Approx. 25g (10-turn)

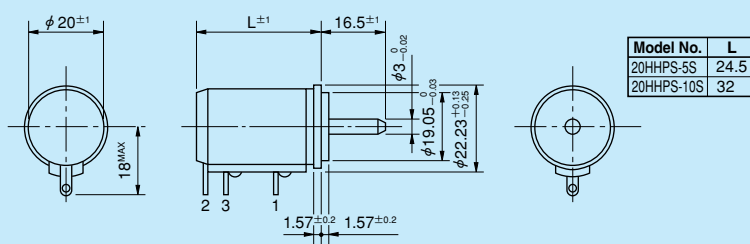
● Standard Dimensions

■ Bushingmount type



Note: 1 pc. inner teeth washer and 2 pcs. hex nuts are attached.

■ Servomount type



● Special Specifications Available

Lower resistance value (1kΩ), Extra taps (Available up to 1 tap), Multi-ganged (Available up to 2 gangs), Rear shaft (2mm dia. and 10mm length), Inch dimensional shaft dia. (φ 6.35mm for 20HHP, φ 3.175mm for 20HHPS) • Bushing with inch dimensions, Special machining on the shaft, Slipping-clutch (20mN·m~60mN·m), Limit-switch adaptor, Simple sealed housing (Available for bushingmount type only).